

FLUSHING RING

KEY DATA

- Accessory intended to be mounted on the branch of a pipe upstream of a separator
- Offers the possibility of rinsing and cleaning the separator membrane if impurities are present - due to pitting (stagnation)
- In the case of a transmitter equipped with a separator, allows cleaning/rinsing of the separator
- Helps for purge and calibration of the transmitter
- Machined from a barstock

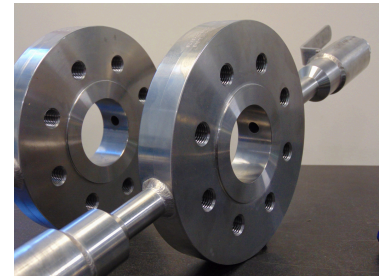


fig 1 : flushing ring with valve outlet

BENEFITS

- ▶ Simple and robust system
- ▶ For all types of fluid
- ▶ Very long lifetime, no maintenance required
- ▶ Custom design according to your specifications
- ▶ Available in different materials



The flushing ring offers the possibility of cleaning the transmitter membrane and thus allows reliable measurements of the process pressure.

TECHNICAL CHARACTERISTICS

- Materials : carbon steel, stainless steel, monel, hastelloy, inconel, duplex, super duplex, titanium, tantalum, PVC, PTFE...
- Flange process connection (RF, RTJ or groove/tongue face)
- Maximum operating pressure: limited by the flange rating
- Nominal diameter: to be adapted according to the size of the connection
- Connection to the flushing outlets to be defined according to your application:
 - screwed, welded, with flange
 - with nipple
 - with valve
- Possibility of integrating a reducer in the flushing ring (see fig 2 here under)
- Optional plugs for flushing orifices
- Manufacturing compatible according to DIN, EN1092-1, EN1759-1, ASME B16.5, API flanges

DRAWINGS

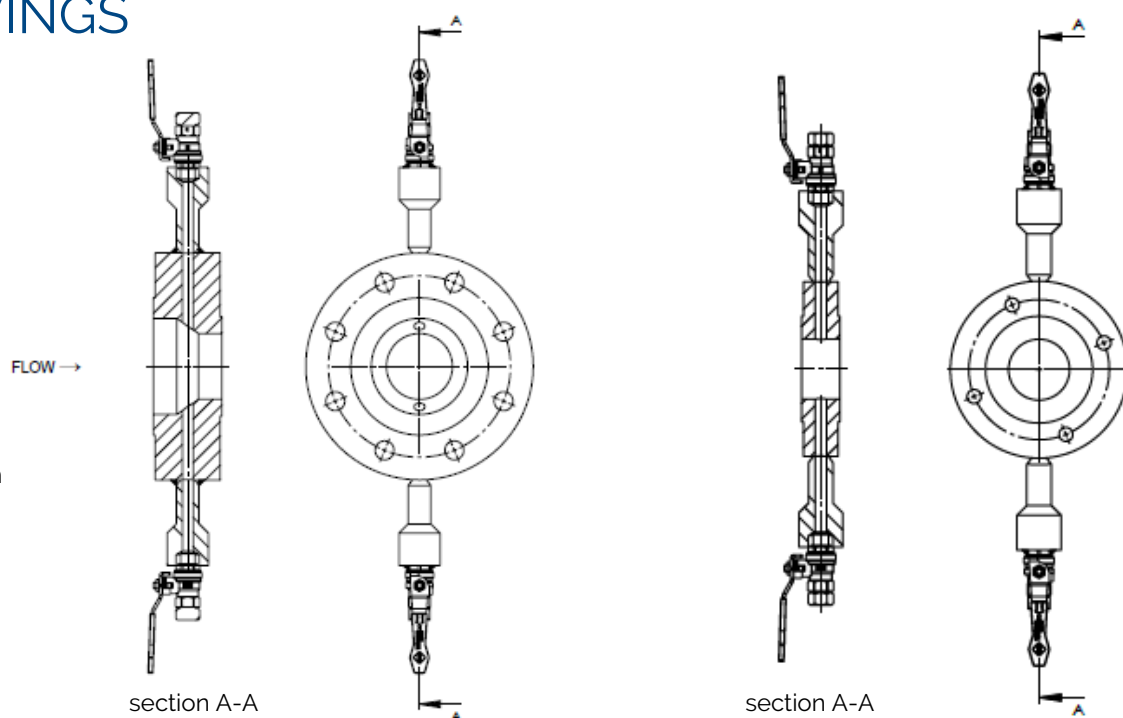


fig 2 : flushing ring with valve outlets

- left, orifice with reducer
- right, concentric orifice

section A-A

section A-A

ITEM CODES

- Flushing ring - ARIN-ND-NP-face type-thickness-flushing outlet types-material

ARIN	ND ⁽¹⁾	NP	Face type	Thickness	Material
Nominal diameter - ASME	3/4" to 6"	150# to 2500#	RF RTJ SEM ⁽²⁾ SEF ⁽²⁾ DEM ⁽²⁾ DEF ⁽²⁾	30 mm 60 mm	A105 A350LF2 304L 316L Others
OR					
Nominal diameter - ISO	DN20 to 150	PN2.5 to 400			

+ precise the flushing outlet types: screwed, welded, with flange, with nipple, with valve

- Examples flushing ring codes:

- ARIN-1-2500-RF-30-304 flushing outlet 1/2 NPT-M
- ARIN : 1"1/2 150# RF 60mm 316
flushing outlet with nipple SW / 1/2" NPT-F, with ball valves

(1) possibility of reducer in the flushing ring: specify inlet ND and outlet ND

(2) specify large or small male/female face if flanges according to ASME B16-5 standards



Chemin Les Augas – RD817
64170 LACQ
FRANCE



delta64@deltafluid.fr



+33 (0)5 59 30 85 20



www.deltafluid.fr



DELTAFLUID